



**LAPORTE COUNTY
RECYCLING**
Solid Waste District

(219) 326-0014

(800) 483-7700

www.solidwastedistrict.com

"one man's trash..."

Solid Waste District of La Porte County



Summer 2024

Your guide to reducing, reusing, and recycling

2024 Household Hazardous Waste Schedule



Saturday, August 3, 9 a.m. to 2 p.m.

Kankakee Valley REMC, 8642 W. Hwy. 30, Wanatah

Electronics and Household Hazardous Waste (batteries, fluorescent bulbs, oil-based paints, sharps, and medications)

September 7-in-1

Saturday, September 14, 8 a.m. to 1 p.m.

La Porte County Fairgrounds, 2581 W. State Road 2, LaPorte

Accepting Tires*, Appliances, Electronics, Confidential Papers for Shredding, Styrofoam, Cardboard, and Household Hazardous Waste (household, lawn, and automotive chemicals and oil-based paints, as well as batteries, fluorescent bulbs, sharps, and medications) *Fee applies for tires.

Saturday, October 19, 9 a.m. to 2 p.m.

Marquette Mall, West Parking Lot, Michigan City

Household Hazardous Waste *ONLY* (batteries, fluorescent bulbs, oil-based paints, sharps, and medications)

www.solidwastedistrict.com



Turner Talks Trash

from the Executive Director's Desk

As we introduce Borden Waste-Away as our new vendor for our recycling program, we kindly ask for your patience while they work out a few initial bugs. During this transition, it's essential to follow best practices to ensure smooth and efficient recycling collection.

Recycling is collected every other week. To check your pickup day or receive recycling reminders, use our Recycle Coach app. Visit www.solidwastedistrict.com/recycling-reminders or download the app to your device.

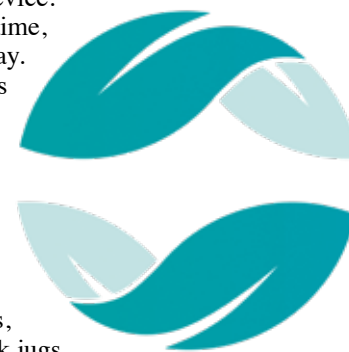
Make sure to place your recycling bins out on time, ideally the evening before your scheduled pickup day. This helps our vendors stay on schedule and ensures your recyclables are collected promptly. If your recyclables are missed, please call us right away so we can address the issue as soon as possible.

To avoid any disruptions, ensure that your recycling bins are free of trash or clear from obstacles. Accepted items include glass bottles and containers, cardboard (excluding wax-covered cardboard), paper, newspaper, junk mail, metal cans, soda cans, plastic bottles, detergent bottles, and milk jugs. Remember to rinse containers to remove any residue before placing them in the bin.

Items that should never be placed in your recycling cart include organic items, food, medical items, films, cables, bags (never bag recyclables), electronics, and batteries. La Porte County residents can take electronic items to 724 Zigler Rd., La Porte, or 1801 Kentucky St., Michigan City.

By following these guidelines and demonstrating patience during this transition period, you contribute to a more efficient and effective recycling program. Thank you for your cooperation and commitment to maintaining a clean and sustainable community.

Clay



"START SMALL: FIRST CHANGE YOURSELF, THEN YOUR HOME, THEN YOUR EXTENDED FAMILY, THEN YOUR COMMUNITY, THEN THE WORLD. THE KEY IS JUST TO START." ~ WINTER NOEL JOY



Join the Effort to Clean Up La Porte County This Summer

This summer, La Porte County residents have an exciting opportunity to make a tangible difference in the community by participating in our Clean It Up! program. We are calling on individuals, families, and organizations to help us create a cleaner and healthier environment by removing litter from neighborhoods, county roads, and public spaces.

Participation is simple. Gather your friends or go out on your own to pick up trash in any area within La Porte County that holds special meaning to you. You can choose any date that fits your schedule, making it easy to contribute without disrupting your routine. We will provide all the necessary supplies, including trash bags to collect litter and bottled water to keep you hydrated while you work. Many local groups have already pledged their support for this initiative. Among the participants are political and religious organizations, school clubs, scout troops, civic organizations, businesses, and families, all eager to contribute to the well-being of our community. Their commitment is a testament to the strong sense of civic duty and community spirit that defines La Porte County.

Signing up for the Clean It Up! program is straightforward. Whether you want to participate or donate supplies, contact Sacha Gee-Burns at 219-326-0014 or sgeeburns@solidwastedistrict.com.

Your involvement will help us maintain the beauty of our county and ensure a cleaner, healthier environment for everyone.



Credit: FangXiaNuo | iStock | Getty Images

The Cost of Contamination

Contamination in recycling and trash might seem like a small issue, but its consequences reach far and wide, impacting our environment, economy, and efforts toward sustainability. When non-recyclable items end up in the recycling bin, they contaminate the entire batch of recyclables. This can render entire loads unsuitable for recycling, forcing them to be sent to landfills instead. Not only does this waste valuable resources, but it also undermines the efforts put into recycling and contributes to overflowing landfills.

Contamination poses risks to recycling facilities and workers. Hazardous materials, such as chemicals or sharp objects, can cause injuries or damage to equipment during the sorting process. These incidents not only endanger the safety of workers, but they also incur additional costs for repairs.

To mitigate the negative effects of contamination, follow these rules:

- **Label Bins Clearly** – Inside your home, label your recycling bins clearly to remind everyone what can and cannot be recycled. Simple, visible labels can make a big difference.
- **Empty, Clean, and Dry** – Empty bottles and other containers, remove excess residue, rinse them out, and allow them to air-dry.
- **Know the Number** – Look to see whether the plastics you are placing in your bin have the recycling triangle with the number 1, 2, 3, 4, 5, 6, or 7 inside of it before placing it in your recycling bin. If an item does not have a number, please call our office at 219-326-0014, and we'll help you figure out the best disposal solution for that item.
- **Save Space in the Bin** – Break down and flatten boxes before recycling. If needed, cut cardboard into pieces no larger than about 18 by 18 inches.
- **Keep It Loose** – Don't bag your recycling. Recyclables should be loose as they go into the bin.
- **Avoid Hazardous Materials** – Never mix tangles, like hoses or cords, or hazardous waste, such as batteries, chemicals, or medical sharps, with your recycling. These items can endanger workers and damage equipment.
- **Steer Clear of Contaminants** – Keep "yucky" items out of the recycling! These include dirty recyclables, greasy pizza boxes, and, especially, diapers.
- **Learn More** – For more tips about recycling, clip and save "Recycling 101" on the back page, or visit www.solidwastedistrict.com.

Reserve ClearStream Recycling Containers Now

This summer, we are pleased to offer ClearStream portable recycling containers for La Porte County residents to reserve for their events. These containers were also available throughout the fairgrounds during the La Porte County Fair, ensuring ample opportunities to recycle.

To reserve a recycling container, follow these guidelines:

- You are responsible for pickup and return.
- The District requires a minimum 24-hour notice for pickup.
- A contact name and number must be registered at checkout time.

For drop-off locations of collected recyclables, you can visit:

- La Porte County Highway Barn, Highway 30 & 421, Hanna
- Michigan City Central Services, 1801 Kentucky Street

To reserve your ClearStream portable recycling container, contact Sacha Gee-Burns at 219-326-0014 or sgeeburns@solidwastedistrict.com.

Donation Over Disposal

In a world where consumerism often reigns supreme, the question of what to do with our possessions when they're no longer of use frequently arises. The knee-jerk reaction for many is to simply toss them away, relegating them to the fate of a landfill. However, a more conscientious approach lies in donating these items.

By donating, we extend the lifespan of these items and lessen our impact on the planet. Additionally, donating can benefit those in need. What might be clutter to us could be a valuable resource to someone else. Clothes, furniture, books, and other household items can find new life in the hands of those who can't afford to buy them brand-new. Donating allows us to contribute to our communities and support those who are less fortunate.

There are several ways to begin. One option is to donate to local charities

or non-profit organizations. There are many thrift stores and donation centers where you can drop off your gently used items. These organizations often support various causes, such as homelessness, education, or healthcare, so you will often have items that are needed.

Another possibility is to donate online. Several websites and apps facilitate the donation process by connecting donors with individuals or organizations in need. Whether it's clothing, electronics, or household goods, there's likely a platform where you can find someone who could benefit from your donations.

You can also consider organizing a donation drive in your neighborhood or workplace. Encourage others to join you in decluttering their homes and donating items to those in need.



Credit: Damian Lugowski | iStock | Getty Images Plus

Total Garbage

Total Garbage by Edward Humes is an eye-opening examination of a pervasive problem that plagues modern society: waste. From overflowing landfills to the exploitation of natural resources, Humes paints a vivid picture of the destructive path we've paved in pursuit of convenience and excess.

One of the most poignant aspects of *Total Garbage* is Humes' exploration of the psychological and emotional toll of our disposable lifestyle. Through insightful analysis and anecdotes, he delves into the sense of emptiness and disconnection that accompanies our relentless pursuit of the next new thing. By exposing the hidden costs of our disposable mindset, Humes challenges readers to confront the true value of their possessions and experiences.

Humes also offers a compelling vision for a more sustainable future, presenting actionable solutions and inspiring examples of individuals and communities striving to break free from the cycle of waste. From innovative recycling initiatives to grassroots movements advocating for change, *Total Garbage* serves as a beacon of hope in an otherwise bleak landscape.

While *Total Garbage* may be a sobering read, it is ultimately a testament to the power of awareness and collective action. By confronting the uncomfortable truths of our throwaway culture, Humes empowers readers to embrace a more conscientious way of living — one that prioritizes stewardship over squandering and connection over consumption.

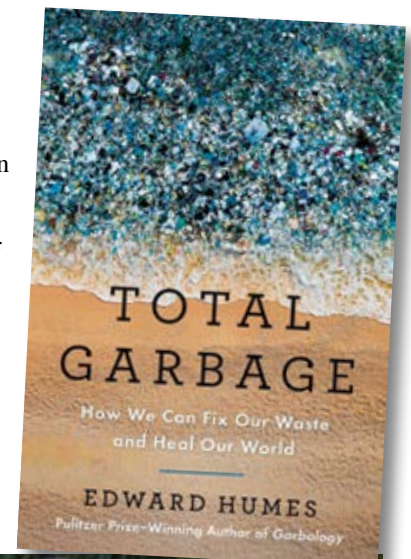


Photo by Michael Goulding, www.edwardhumes.com



Back-to-School Savings

As the back-to-school season approaches, it's time to gear up for another academic year. However, this doesn't mean you'll have to break the bank. With proper planning and smart choices, you can navigate back-to-school shopping while saving money and reducing waste.

- Take inventory of what you already have. Many items, like backpacks, binders, and calculators, can be reused from previous years, saving you money and reducing unnecessary purchases.
- Shop secondhand. Thrift stores and online marketplaces are treasure troves for affordable and gently used school supplies. From clothing to textbooks, buying secondhand not only saves money, but it also reduces the demand for new production.
- Invest in durable, high-quality items that will last longer. While they may have a higher upfront cost, they will save you money in the long run by eliminating the need for frequent replacements. Look for products made from sustainable materials, like recycled paper.
- Take advantage of sales and discounts by planning your shopping in advance. Start looking for deals early and consider bulk-buying essentials like pencils and notebooks to save both money and packaging waste.
- Try DIY. Get creative and make your own school supplies whenever possible. From decorating plain notebooks to sewing your own pencil case, DIY projects are not only fun, but they are also eco-friendly and budget-friendly.
- Pack a waste-free lunch. Invest in reusable containers, water bottles, and utensils to pack your lunch. Not only does this reduce single-use plastic waste, but it also saves money compared to buying pre-packaged meals every day.
- Be a mindful consumer. Before making a purchase, consider if you really need it.

Drop Off Your Plastic Bags for Recycling!

Recycle plastic grocery bags, shrink wrap, case wrappers, bubble wrap, deflated plastic packing pillows, clean zippered plastic storage bags, bread bags, and other plastic bags in special bins at our office, located at 2857 W. State Road 2 in La Porte. Many grocery and home improvement

stores also accept empty, clean plastic bags and films for recycling. **Remember — no plastic bags in your blue curbside toters!** Our thanks to WM, GIS Insurance, Al's Supermarkets,



Republic Services, NIPSCO, Tradebe, and Borden Waste-Away for supplying reusable shopping bags that we've given to residents over the past year.

Drop-Off Recycling Programs

We offer many drop-off programs. With the exception of electronics, all of these items are accepted in the Solid Waste District office lobby, located at 2857 W. State Road 2 in La Porte. When you come in to drop off items, please sort them correctly into the labeled bins.

TREX Plastic Bags/Films

Help us to collect plastic films in our community for recycling. Every time we reach our goal of 500 pounds in a 6-month period, we are awarded a bench made from plastic bags and films to be placed out in our community.

Accepted Items:

- Grocery bags
- Bread bags
- Case overwrap
- Dry cleaning bags
- Newspaper sleeves
- Ice bags
- Wood pellet bags
- Ziploc and other resealable bags
- Produce bags
- Bubble wrap
- Salt bags
- Cereal bags

All plastic must be clean, dry, and free of food residue.

Additional Drop-Off Programs

Drop off these items in the Solid Waste District office lobby:

- Corks (natural only)
- Pop tabs
- Bread tags
- Crayons
- Lego Replay
- Markers
- Batteries
- Inkjet/toner cartridges
- Fluorescent or LED bulbs (4' max length)
- Phones
- Silicone wristbands

Terracycle

We collect many different items for Terracycle and hope to add more as they become available. Please check at our office or website for any new collections.

Any Brand Accepted Programs

- Baby/toddler clothing
- Biotrue Eye Care – contact lens cases/ packaging, solution bottle caps, eyedrop vials
- Drink pouches
- Febreze-type air care items
- GoGo squeeze-type snack pouches and caps
- Instrument strings
- Oral care items – toothbrushes, floss containers, toothpaste tubes
- Personal care items (tubes, bottles, deodorant containers)
- Popsockets, packaging, phone cases
- Razors, handles from razors, packaging
- Taco Bell sauce packets – all sauce packets accepted

Brand-Specific Programs

- Arm & Hammer and OxiClean pouches
- Aussie Hair care packaging
- Beekman 1802 beauty packaging
- Benebone dog chews
- Bimbo Bakeries bags
- Brita water filters/packaging
- Burt's Bees – any item they produce
- Colgate Wisp brushes and packaging
- Don Francisco's coffee pods
- Dunkin coffee bags
- Earthborn Holistic pet food bags



- Entenmann's snack bites
- EOS beauty items
- Febreze air care items
- Funsicle Inflatables
- Garnier beauty items
- Gatorade sports nutrition packaging
- Gerber clothing hangers and packaging
- Gold Bond, Cortizone 10, Selsun Blue items
- Hasbro brand toys
- Herbal Essence items
- Kroger – our brands packaging
- Living Proof hair care items
- Newell brand fragrance – Yankee Candle, Woodwick, Chesapeake Bay
- Open Farm pet food bags
- Royal Canin and Eukanuba bags/ packaging
- Schwarzkopf aerosol, haircolor, and haircare items
- Spinmaster brand toys
- Stanley Black & Decker tools
- Swiffer brand cleaning items
- VTech and Leap Frog toys
- Wellness pet food bags and pouches

Electronics Recycling

We have two locations with drop-off trailers for electronics recycling.

- 724 Zigler Road, La Porte
- 1801 Kentucky Street, Michigan City

Recycle More

There is so much more to recycle than just the items approved for curbside pickup. We try to search out different companies and organizations that are recycling items that many of us dispose of at home and are partnering with them to start collections in our area to help divert more waste from going to the landfill.

To learn more about all of our programs, visit www.solidwastedistrict.com.



www.wasteawaygroup.com

RECYCLING 101



THE MATERIALS THAT WE **ALWAYS** ACCEPT



Glass Bottles and Containers



Cardboard, Paper, Newspaper, Junk Mail (No wax covered cardboard)



Metal Cans and Soda Cans



Plastic Bottles, Detergent Bottles, Milk Jugs

THE MATERIALS THAT WE **NEVER** ACCEPT



No Organic Items, Food Items, or Medical Items



No Films, Cables, or Bags (**Never Bag Recyclables**)



No Electronic Items
(La Porte Co. Residents can take electronics to:
724 Zigler Rd. LaPorte, IN, or,
1801 Kentucky St. Michigan City, IN.)



NEVER put Batteries in your Recycling Cart



District Board Members
Councilman Mike Mollenhauer – Chair
Councilman Don Przybylinski – Vice Chair
Mayor Tom Dermody
Commissioner Connie Gramarossa
Commissioner Joe Haney
Commissioner Rich Mrozinski
Mayor Angie Nelson Deutch

Citizens Advisory Committee
Justin Kiel – Chairperson
Samantha Joll – Vice Chairperson
Chris Havens – Secretary
Paul Brooks
Juli Charlesworth
Amy Feikes
Jim Irwin
Jim Micheals
Amber Seiler

Staff
Clay Turner, Executive Director
Robin Havens, Office Manager
Lisa Woodson, Recycling Coordinator
Sacha Gee-Burns, Environmental Educator and Public Outreach Coordinator
Lyn DeGroote, Controller
Scott Lynn, Project Coordinator/HHW Coordinator
Vincent Sherman, Compost Site Program Coordinator
Abraham Moyao, Compost Utility

HELPFUL HINTS TO AVOID IMPROPER RECYCLING

“WISHCYCLING” IS COUNTER-PRODUCTIVE

Tossing items into the recycling without checking whether they are recyclable causes significant issues at our plant. In many cases, these unacceptable items will be sent to the landfill regardless.

ACCEPTED PLASTICS

<p>PET</p> <p>Polyethylene Terephthalate</p> <p>Clear tough plastic such as soft drink, juice, and water bottles</p>	<p>HDPE</p> <p>High-Density Polyethylene</p> <p>Common white/colored plastics such as milk jugs and shampoo bottles</p>	<p>PVC</p> <p>Polyvinyl Chloride</p> <p>Hard rigid clear plastics such as squeeze bottles and window cleaner bottles (NO PVC PIPING)</p>	<p>LDPE</p> <p>Low-Density Polyethylene</p> <p>Soft flexible plastic, e.g. squeezable sauce bottles (NO FILM)</p>	<p>PP</p> <p>Polypropylene</p> <p>Hard but flexible plastics such as prescription bottles, yogurt cups, drink cups</p>	<p>PS</p> <p>Polystyrene (NO STYROFOAM)</p> <p>Rigid brittle plastics such as small tubs and butter containers</p>	<p>OTHER</p> <p>Other Plastics</p> <p>All other plastics Ex: sports bottles, baby bottles, clear water coolers, etc.</p>
--	---	--	---	--	--	--



www.facebook.com/LPCoRecycling
www.twitter.com/LPCoRecycling
www.youtube.com/LPCoRecycling



What do I do with latex paint?

NO LATEX PAINTS will be accepted for disposal at our household hazardous waste collection events. Latex paint is not considered hazardous waste. If you have a small amount of paint or it is unusable, allow the paint to dry out by leaving the lid off the can or by adding kitty litter or sand to harden it. Then dispose of the dried-out paint can, with the lid off, in your regular trash.

We want your suggestions, questions, and comments!
Solid Waste District of La Porte County
2857 W. State Road 2
La Porte, IN 46350
(219) 326-0014 • (800) 483-7700
www.solidwastedistrict.com

Copyright© 2024
The Solid Waste District of La Porte County and Eco Partners, Inc.
All rights reserved.



PLEASE RECYCLE AFTER READING.